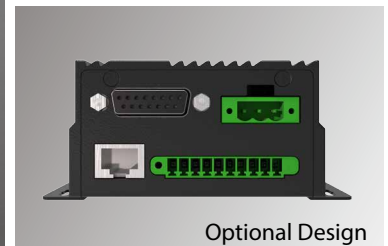
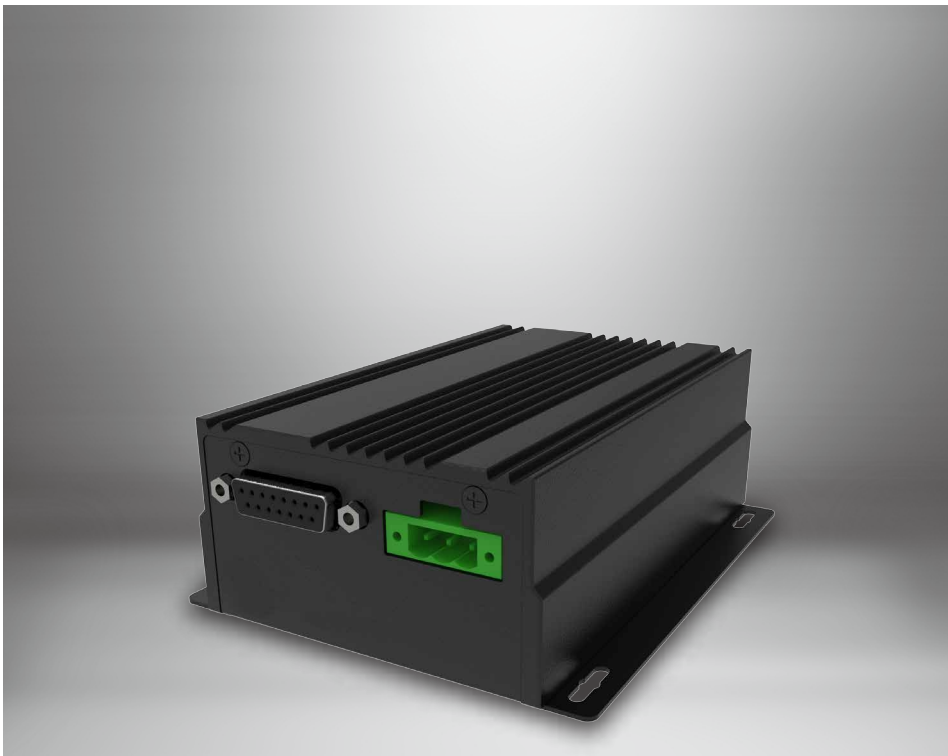


VG-100, Vehicle Gateway

Connecting Vehicles on the Road

VG-100 is a gateway designed to be integrated into vehicles as an accessory for the M900P rugged tablet. It provides communications across in-vehicle by the CANbus, RS485 interfaces, Line out, GPIOs and optional DIDs & LAN. It can also control I/O based upon message and signals received from the vehicle network.



Highlights

- RS485, CANBus for communications with vehicle ECU
- USB 2.0 Type A Connector for Video Grabber Dongle
- Optional DIDs & LAN port
- Wide power input 9-36V DC and ignition control
- Protection of short circuit with automatic recovery
- Power output 12V DC for M900P tablet
- Dedicated solid molding cables for vehicle data communications
- E-Mark vehicle certification with M900P

VG-100, Vehicle Gateway

Connecting Vehicles on the Road

Interface

CANBus	1 x CANBus connector with isolation
RS485	1 x RS485 connector with isolation
USB	1 x USB 2.0 Type A connector
GPIO	2 x input, 2 x output (5V)
Power Input	1 x 3 pin terminal block with isolation
Audio	Line out
Digital I/O	DIDO (Optional, 7-in, 1-out)
Ethernet	RJ45 (Optional, 10/100 LAN)

Power Management

Power Input	9-36V DC stabilized constant vehicle power
Power Output	12V DC for tablet computer
Power Ignition	Vehicle power ignition
Surge Protection	Protection of short circuit with automatic recovery
Power Off Delay	Support power off delay time

User Controls

LED Indicators	1 x LED Indicator (Green)
----------------	---------------------------

Mechanical Specifications

Dimensions ²	132 x 84 x 46.2 mm
Weight	0.5 kg
Housing	Metal
Mounting	2 Screws on both side (Total 4)

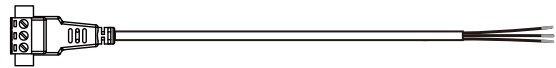
Environment

Operating Temperature	-20°C to 70°C
Storage Temperature	-25°C to 80°C
Humidity	-10% to 90% RH, non-condensing

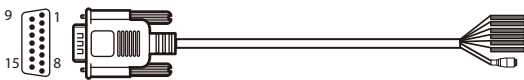
Accessories

Standard Accessories

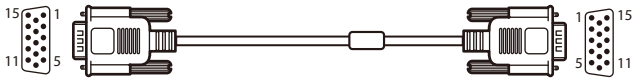
Cable to Vehicle Power, 1.8m



D-sub cable to Vehicle data, 1.8m (CANBus, RS485, Audio out, GPIO)



D Sub Cable to Tablet, 2m



1. Length measurements do not include protrusions.
2. Accessories and may vary depending on your configuration.
3. This is a simplified drawing and some components are not marked in detail.

Drawing ¹

